



340 The Highway, London, E1W

BUTLER  STAG



A spacious and light three double bed roomed apartment located in an iconic building direct on the river Thames with Gym, Concierge and swimming pool available now.



- Available Now
- Two Fitted Bathrooms
- Swimming Pool
- 24 Hour Concierge
- Direct River Views
- Three Double Bedrooms
- Gym
- Close to Limehouse Station
- Private Balcony

Located in one of London's most iconic buildings with direct views over the river Thames is this amazingly spacious three double bed roomed apartment which comes with its own private balcony.

Being over 1,100 square foot of interior space and comprising of three double bedrooms, two fitted bathrooms, a fully fitted kitchen and an open plan light living space leading to a private balcony with direct views over the River Thames. Could also be used as a two bed with a generous study / work from home space.

The property also benefits from a 24 hour concierge, a fitted gym, and a swimming pool.

Located in Wapping and being close to both Limehouse and Shadwell stations the property gives easy access to the city and beyond.

Available now!

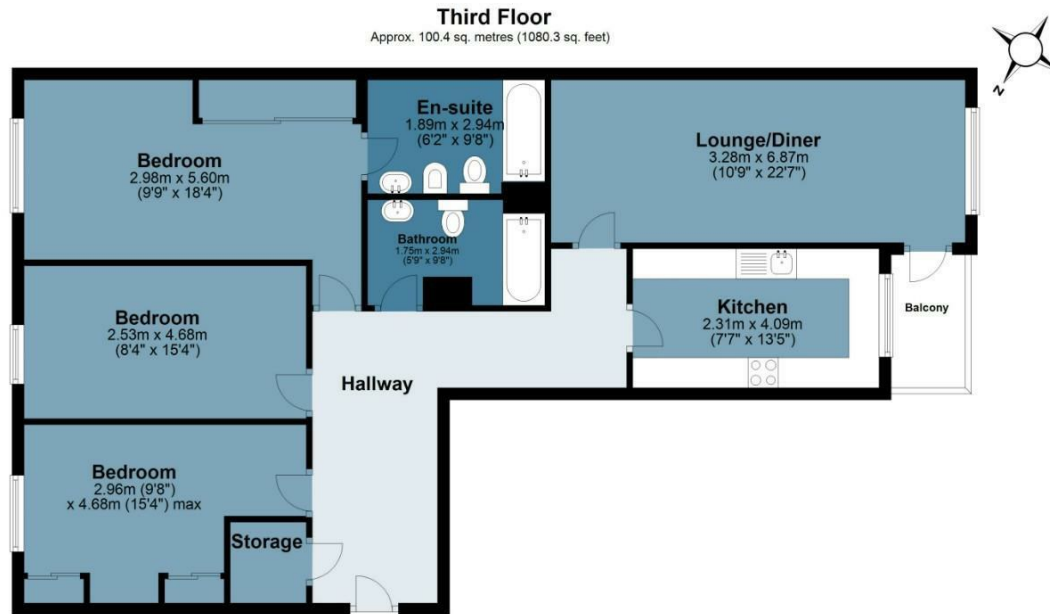




Free Trade Wharf

Approx. Gross Internal Area 100.4 Sq M (1080.3 Sq Ft)

BUTLER & STAG



Floor plan is for illustrative purposes only and is not to scale. Every attempt has been made to ensure the accuracy of the floor plan shown, however all measurements, fixtures, fittings and data shown are an approximate interpretation for illustrative purposes only.

IMPORTANT NOTICE - These particulars have been prepared in good faith and they are not intended to constitute part of an offer or contract. We have not performed a structural survey on this property and the services, appliances and specific fittings have not been tested. All photographs, measurements, floor plans and distances referred to are given as a guide and should not be relied upon.

BUTLER & STAG

☎ 020 8102 1236

🏠 508 Roman Road, Bow, London, E3 5LU

✉ bow@butlerandstag.com

www.butlerandstag.uk